

# TAKE CONTROL

HYDRAULIC TOPLINK GUIDE



**MOTUS<sup>®</sup>**

# TOPLINK RANGE

We build toplink cylinders for 15 to 500hp rated tractors

Need a Custom  
built ram? Call  
0800 668 874  
1800 839 249

TRACTOR RANGE	CODE	BORE x SHAFT x STROKE	CLOSED CENTRES MM	OPEN CENTRES MM	MOUNTING DETAILS		TONNAGE @ 2250 PSI		PRICE	
					TRACTOR	SPEAR	PUSH	PULL		
<b>Most tractors</b>	15-35hp	TL-A	2 x 1 x 250mm	538	788	CAT 1	CAT 2	3.14	2.35	\$583
	15-35hp	TL-A2	2 x 1 x 250mm	533	783	CAT 1	CAT 1	3.14	2.35	\$570
	30-70hp	TL-B	2½ x 1¼ x 250mm	535	785	CAT 1	CAT 2	4.90	3.68	\$657
	30-70hp	TL-B2	2½ x 1¼ x 200mm	459	659	CAT 1	CAT 2	4.90	3.68	\$657
	70-130hp	TL-C	2½ x 1¼ x 250mm	566	816	CAT 2	CAT 2	4.90	3.68	\$558
	70-130hp	TL-C QH2	2½ x 1¼ x 250mm	566	816	Knuckle	CAT 2 QH	4.90	3.68	\$750
	110-150hp	TL-D	3 x 1½ x 250mm	566	816	CAT 2	CAT 2	7.06	5.30	\$682
	110-150hp	TL-D QH2	3 x 1½ x 250mm	566	816	Knuckle	CAT 2 QH	7.06	5.30	\$918
	140-200hp	TL-E	3½ x 1¼ x 300mm	680	980	CAT 3	CAT 3	9.62	3.68	\$1197
<b>John Deere</b>	60-120hp	TL-F	2½ x 1¼ x 250mm	538	788	20mm ball	CAT 2	4.90	3.68	\$682
Knuckle type end: suits most brands	Knuckles available in 4 sizes: 20mm, 1", 28mm, 32mm (CAT 1, 2, 28mm, 3)									
	100-130hp	TL-G	2½ x 1¼ x 250mm	574	824	Knuckle	CAT 2	4.90	3.68	\$707
	100-130hp	TL-G QH2	2½ x 1¼ x 250mm	574	824	Knuckle	CAT 2 QH	4.90	3.68	\$869
	100-130hp	TL-G QH3	2½ x 1¼ x 250mm	574	824	Knuckle	CAT 3 QH	4.90	3.68	\$1035
	130-170hp	TL-H	3 x 1½ x 250mm	574	824	Knuckle	CAT 2	7.06	5.30	\$831
	130-170hp	TL-H QH2	3 x 1½ x 250mm	574	824	Knuckle	CAT 2 QH	7.06	5.30	\$1066
	130-170hp	TL-H QH3	3 x 1½ x 250mm	574	824	Knuckle	CAT 3 QH	7.06	5.30	\$1079
	130-170hp	TL-H1	3 x 1½ x 250mm	654	904	Knuckle	CAT 2	7.06	5.30	\$720
	130-170hp	TL-H1 QH3	3 x 1½ x 250mm	654	904	Knuckle	CAT 3 QH	7.06	5.30	\$1221
	180-240hp	TL-H2	3½ x 1¼ x 250mm	594	844	Knuckle	CAT 3	9.26	7.21	\$1228
	180-240hp	TL-H2 QH2	3½ x 1¼ x 250mm	594	844	Knuckle	CAT 2 QH	9.26	7.21	\$1128
	180-240hp	TL-H2 QH3	3½ x 1¼ x 250mm	594	844	Knuckle	CAT 3 QH	9.26	7.21	\$1556
	200-300hp	TL-H3	4 x 2 x 250mm	594	844	Knuckle	CAT 3	12.56	9.42	\$1500
	200-300hp	TL-H3 QH3	4 x 2 x 250mm	594	844	Knuckle	CAT 3 QH	12.56	9.42	\$1717
<b>Valtra &amp; MF</b>	90-120hp	TL-O	2½ x 1¼ x 300mm	595	895	CAT 2	CAT 2	4.90	3.68	\$595
<b>Valtra &amp; MF</b>	90-120hp	TL-O QH2	2½ x 1¼ x 300mm	595	895	Knuckle	CAT 2 QH	4.90	3.68	\$924
<b>Valtra &amp; MF</b>	110-150hp	TL-P	3 x 1½ x 300mm	595	895	CAT 2	CAT 2	7.60	5.30	\$570
<b>Case CX</b>	90-120hp	TL-Q	2½ x 1¼ x 250mm	537	787	Tongue	CAT 2	4.90	3.68	\$570
<b>Case CX</b>	110-150hp	TL-Q2	3 x 1½ x 250mm	537	787	Tongue	CAT 2	7.60	5.30	\$685
<b>JD5500 10 Series</b>	70-130hp	TL-R	2½ x 1¼ x 200mm	500	700	CAT 2 (50w)	CAT 2	4.90	3.68	\$670
<b>JD5500 20 Series</b>	70-130hp	TL-R2	2½ x 1¼ x 200mm	500	700	CAT 2 (44w)	CAT 2	4.90	3.68	\$707
<b>Ferrari</b>	70-130hp	TL-S	2½ x 1¼ x 155mm	425	580	CAT 1	CAT 2	4.90	3.68	\$657
<b>Ferrari</b>	70-130hp	TL-S2	2½ x 1¼ x 155mm	425	550	CAT 1	CAT 2	4.90	3.68	\$618
	250hp +	TL-X	5 x 2½ x 166mm	690	856	CAT 3 & 4	CAT 3 & 4	19.59	14.69	\$2759

This chart is a guide only - consideration should be made for the type of implement that will be fitted.

\* The cylinder mount fits to the tractor 'link' which is permanently fixed to the tractor.

This chart is a guide only - consideration should be made for the type of implement that will be fitted.

\* The cylinder mount fits to the tractor 'link' which is permanently fixed to the tractor.

**4**  
YEAR  
WARRANTY

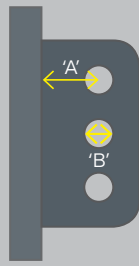
**MOTUS** KEEP YOU MOVING

WWW.MOTUSHYDRAULICS.COM

## TO ORDER

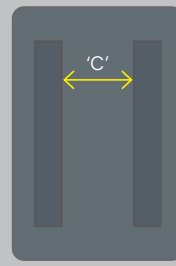
**Ordering a new MOTUS toplink is simple:** Measure the dimensions A, B and C on your tractor ram mounting plates and tell us your tractor model and HP rating.

Finally, check whether you will need a custom spacer and we will recommend the appropriate size toplink.



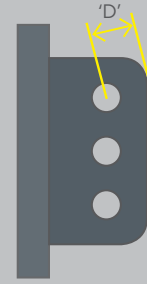
**1** Measure distance 'A' from hole centre to back plate

**2** Measure pin size 'B'



**3** Measure distance 'C'

**4** Tractor size and HP

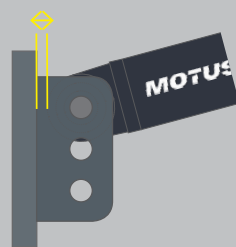


**5** Check whether you will need a custom spacer added to your ram: measure distance 'D' from the centre of the pin hole to outside top radius of mount plate

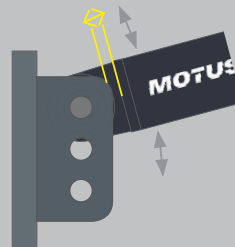
## BEFORE USE

**To ensure long toplink life, check clearances for free movement before use.**

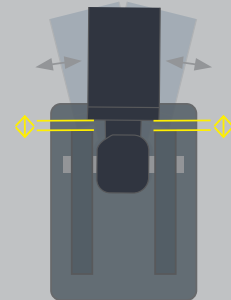
We recommend that you install your MOTUS toplink using the **top hole** in the mounting plates.



**1** Double check clearance between ram and mounting plates



**2** Check clearance between ram base and flanges on mounting plates



**3** Check side to side clearance

## OPTIONS



See back cover for our standard toplink range

Quick hook  
CAT 2 \$252  
CAT 3 \$352

Position indicator  
\$120

Hydraulic safety lock valve  
\$240

Knuckle base end CAT 1, 28mm, CAT 2, CAT 3  
\$221

## ACCESSORIES



Toplink hose kit  
\$120



Weld-on TL  
\$120



Knuckles  
\$221



Quick hook balls  
CAT 2 or 3 \$17.50

# RAMS YOU CAN RELY ON

We invented and have been designing and building hydraulic toplinks in the Australasian market since 1963. MOTUS rams are built to last - in fact, rams we built in the 70s are still going strong.

**4**  
**YEAR**  
**WARRANTY**

## **MOTUS TOPLINKS FEATURE**

- Extra thick walled tube for strength and blowout resistance
- Unique cast iron floating head with a larger bearing surface
- Special ports give you ultimate control over your implement
- A huge range of ball ends, knuckles and hooks is available
- Superior quality ball ends with highly accurate internal profile and hardened ball doesn't get sloppy
- Greater ball angle allows more freedom of movement for your implements

## **CUSTOM BUILD**

Motus have a vast range of sizes available to suit virtually any tractor. If you need something special, call our helpful team and they'll guide you through our custom build service.

## **TRACEABILITY**

A unique identification number is stamped into each ram for full traceability and parts backup.

## **4 YEAR WARRANTY**

Backed by more than 60 years experience, we confidently offer a 4 year warranty on all of our toplinks.

**DISTRIBUTED BY:**